



0230-0389-A

PO BOX 4394  
SANTA ROSA, CA  
95402 USA

P (707) 525-9941  
F (707) 575-7046  
EMGPICKUPS.COM

## INSTALLATION INFORMATION

### EMG MODELS: E4W, E5W, E6W

#### SPECIFICATIONS:

Logo Color  
Magnet Type  
Resonant Frequency (kHz)  
Typical Output Noise (dBV)  
Output Impedance (k $\Omega$ )  
Current Draw @9V (mA) \*  
Current Draw @18V (mA) \*  
Maximum Supply (Volts DC)

#### MODEL:

E4W/E5W/E6W  
Silver  
Ceramic  
12.2  
-120  
3.16  
0.38  
0.42  
27

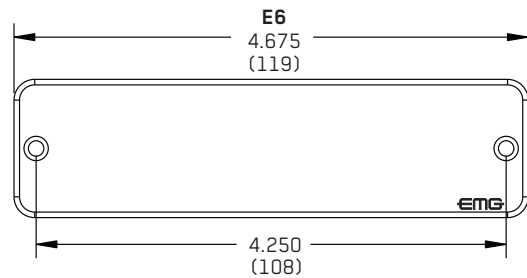
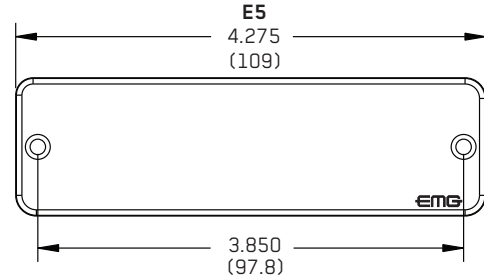
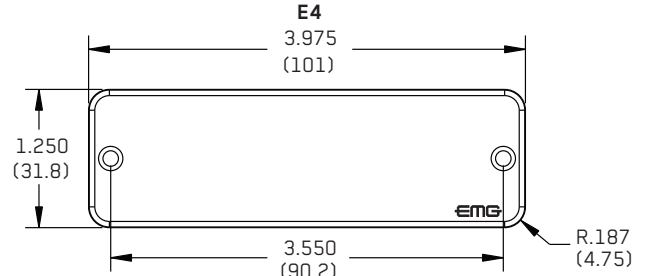
\*Note: current draw for one pickup, without any active EQ accessories

#### MODEL SUMMARY:

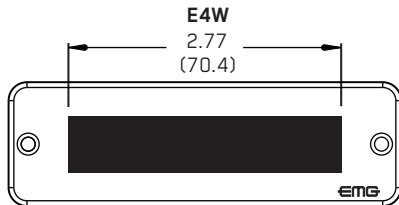
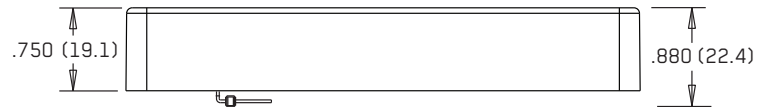
The EMG "E-Series" pickups were designed for modern bass players seeking a full, powerful sound from a pickup in a slim soapbar housing. The series includes three pickups of varying lengths and 1.25" (32mm) width, each named for the most common string configurations. Depending on string spacing, any of these sizes may be used by 4, 5, or 6-string instruments.

"W" refers to a WIDE magnet and coil stack design. These pickups are unique in having a large string detection area, and this contributes to a distinctly broad EQ response with hefty low-end and a "thunderous" attack.

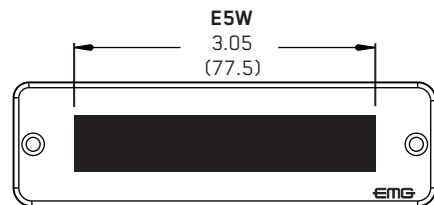
Pair these models with an EMG Control System for even greater tonal possibilities.



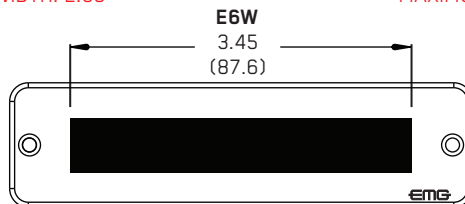
.125 (3.17) DIA. MOUNTING HOLES



MAXIMUM RECOMMENDED STRING WIDTH: 2.30"



MAXIMUM RECOMMENDED STRING WIDTH: 2.60"

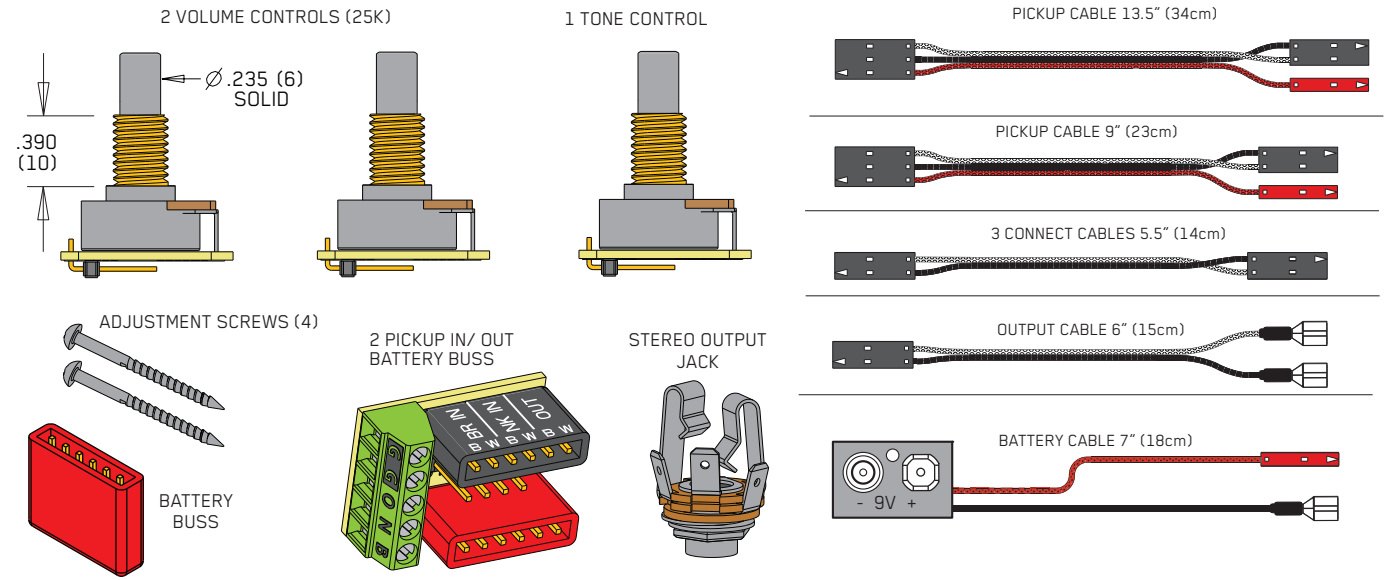


MAXIMUM RECOMMENDED STRING WIDTH: 3.00"

#### WARRANTY

All EMG Pickups and accessories are warranted for a period of two years. This warranty does not cover failure due to improper installation, abuse or damage. If upon examination the pickup is determined to be defective, a replacement will be made. Warranty replacement products are covered by this same warranty. This warranty covers only those pickups and accessories sold by authorized EMG Dealers. This warranty is not transferable.

## INCLUDED WITH EACH SET:



## Installation Instructions: EMG Models: E4, E5, E6

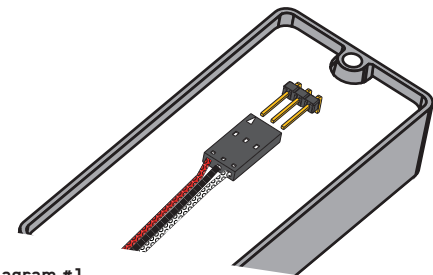
### General Notes:

Every attempt has been made to make this a solderless installation.

There are some instances where this is not possible;

- 1) If your instrument uses a long panel output jack and you had passive pickups you will need a new stereo output jack, the Switchcraft 152B is recommended. Soldering to the new jack will be required, see Diagram #6 on Page 4.
- 2) Some instruments may already have a battery holder installed. In that case soldering may be required to the battery buss, see Page 4.
- 3) Instruments with two pickups may need soldering to the selection switch in some installations.

If you are installing only one pickup use the instructions on this page.  
If you are installing two pickups go to Page 3 and begin there.



**Diagram #1**

Insert the plug onto the 3 pin header of the pickup as shown above.  
Note the orientation arrow.

### Installation (One Pickup Guitars):

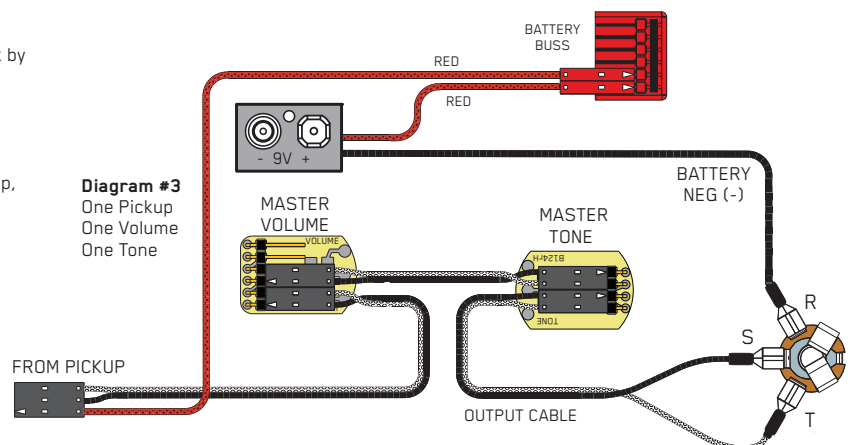
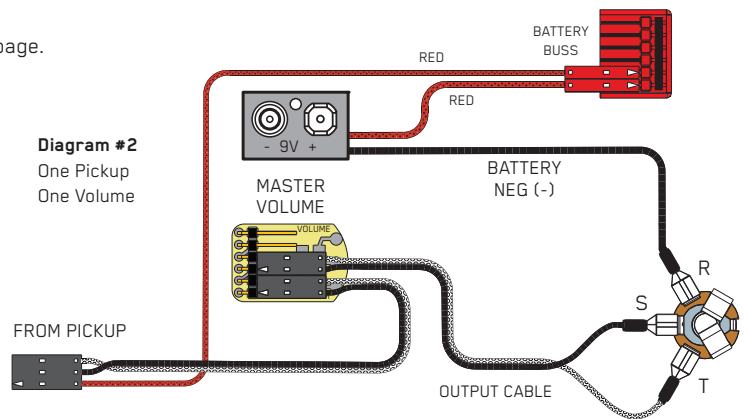
- 1) Plug the pickup cable onto the EMG Pickup header as shown in Diagram #1 and route the cable to the control cavity. If the cable is too long, wind up the excess and keep it under the pickup if possible.

#### Master Volume control only

- 2) Refer to Diagram #2. Plug both the Pickup cable and the output cable onto the Volume control as shown, then go to step 4.

#### Master Volume and Tone control

- 3) Refer to Diagram #3. Plug the Pickup cable onto the Volume control as shown. Plug a connect cable from the Volume control to the Tone control. Plug the output cable onto the Tone control as shown.
- 4) Connect the wires of the output cable to the output jack by pushing the connectors on as shown.  
WHITE wire to the TIP (T) contact,  
BLACK wire to the SLEEVE (S) contact  
BLACK Battery Negative wire to the RING (R) contact.
- 5) Using the battery buss, insert the RED wire of the pickup, and the battery RED wire. Extra pins can be used for EMG Accessories.
- 6) Put the battery in insulating foam and place it securely in the control cavity.  
We suggest that you plug in the instrument and test it before closing the control cavity.



## Installation Instructions:

### EMG Models: E4, E5, E6

#### 2 Pickups, 2 Volume controls and Master Tone, no selection switch

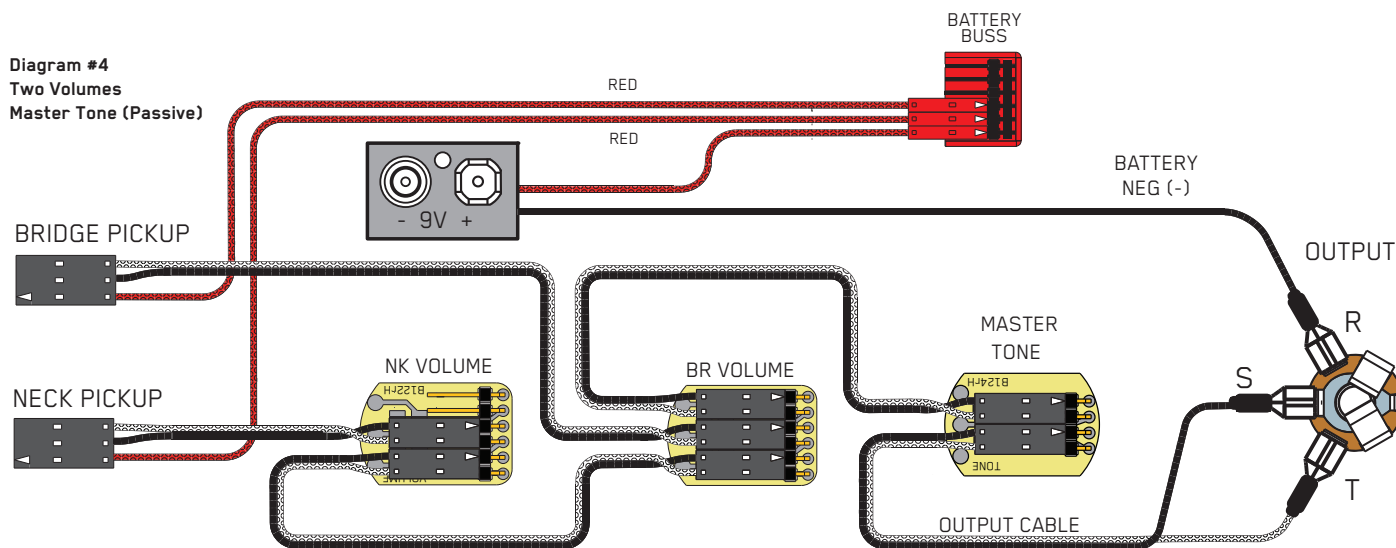
##### J-Bass Style wiring

##### Refer to Diagram #4

- 1) Install the Pickups and route the Pickup cables to the control cavity.  
If the cables are too long, keep any excess under the pickup.
- 2) Mount the Volume and Tone controls into the body / pickguard.  
Plug the Neck Pickup Cable onto the Neck Volume control.  
Plug the Bridge Pickup Cable onto the Bridge Volume control.
- 3) Plug a connect cable from Neck Volume control to Bridge Volume control.
- 4) Plug a connect cable from Bridge Volume control Master Tone control.
- 5) Plug the output cable onto the Master Tone control and connect the output wires to the output jack by pushing the connectors on as shown.  
WHITE wire onto the TIP (T) contact,  
BLACK wire onto the SLEEVE (S) contact  
BLACK Battery Negative wire onto the RING (R) contact.
- 6) Plug the RED Wires of the pickups onto the V+ Supply Buss (RED Shroud) along with the RED of the battery clip.
- Extra pins on the V+ Battery Buss are for EMG Accessories.
- 7) Put the battery in a piece of insulating foam and place it securely in the control cavity. We suggest that you plug in the instrument and test it before closing the control cavity.

#### \*\*\*\*Tips and Tricks\*\*\*\* Start your installation by:

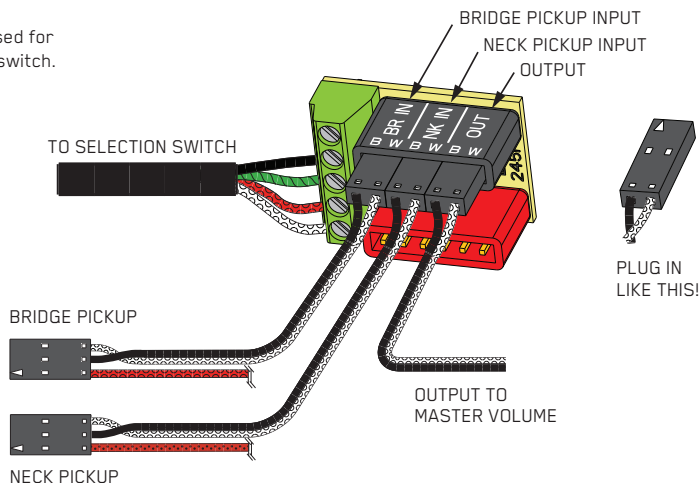
- 1) Determining which type of output jack your instrument has.  
Stereo 12B type is included, but if you have a long panel jack, SwitchCraft 152B Long Panel Jack will be required.
- 2) Remove the strings, remove any existing Pickups and controls (remember the order and function of each control)
- 3) Determine a good spot for the Pickup Buss and make sure the cable or wires from the selection switch will reach the Pickup Buss,
- 4) Install the EMG Volume and Tone Controls and tighten them in.
- 5) Install the pickups, keeping any excess cable under the pickup rather than in the control cavity.



#### If your instrument has a selection switch:

Shown at the right is the EMG B245 Pickup Buss which is used for instruments that have 2 pickups and a 3 position selection switch.

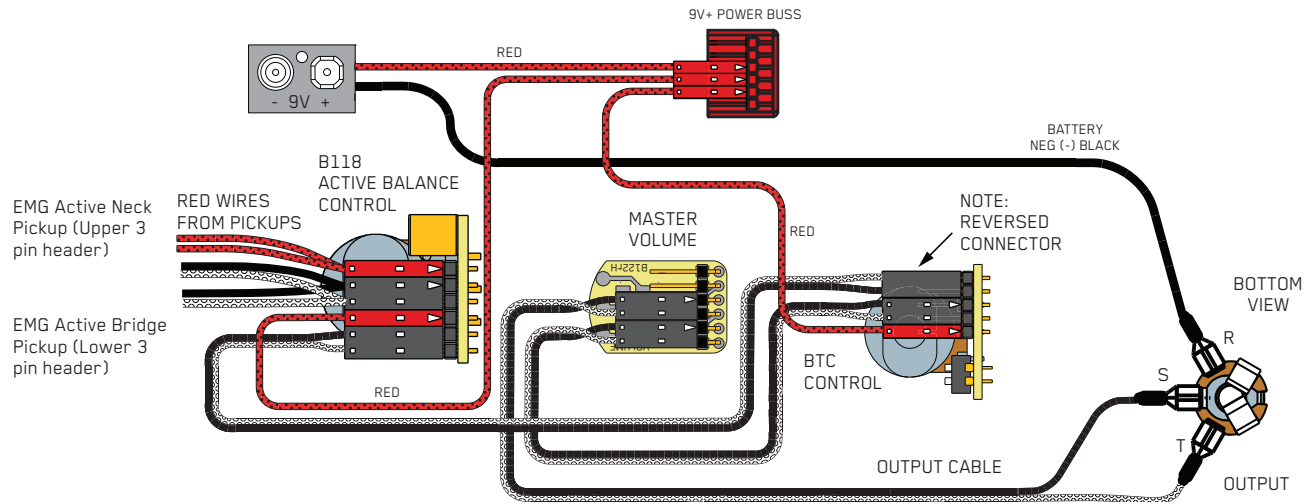
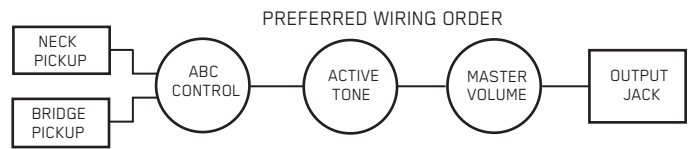
If you have a selection switch and want a completely solderless installation with the B245 Buss, please visit [emgpickups.com](http://emgpickups.com) for additional wiring diagrams.



### Diagram #5

#### Master Volume / Active Balance Control / Active Accessory

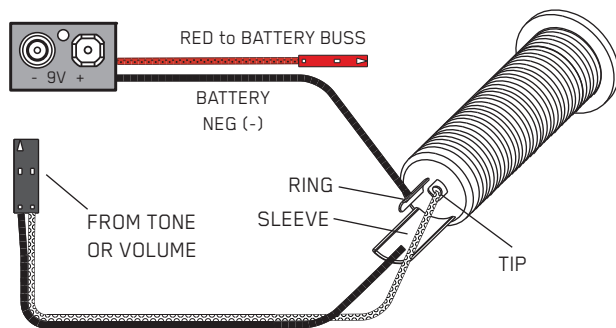
This diagram is for installations that include the EMG ABCX Active Blend Control and BTC Control (2-band EQ). The BTC Control shares the same 5-pin connection scheme as many other EMG accessories such as the BTS, EXB, SPC, and more. Each accessory is sold separately. Visit [emgpickups.com](http://emgpickups.com) for more information.



### Diagram #6

#### Soldering to the 152B Panel Jack:

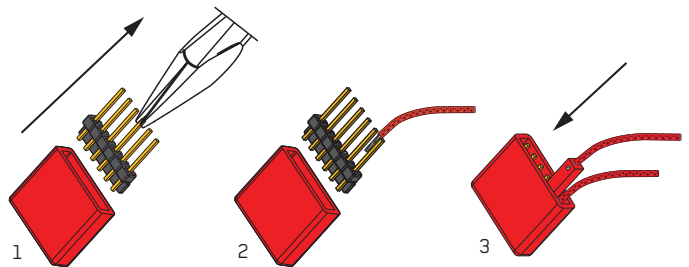
If your instrument has a long Panel Jack like the one below, you will have to solder the output cable as shown.  
Ground (Black) to the SLEEVE  
Signal (White) to the TIP  
Battery Negative (Black) to the RING



### Diagram #7

#### Soldering to the battery buss:

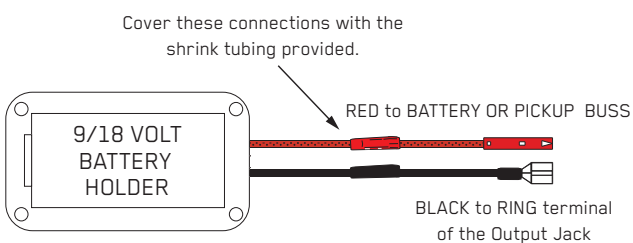
If your instrument has an older EMG Pickup you can solder the pickup RED wire to the buss. Simply use some needle nose pliers, pull out the V+ header and solder the RED Wire from the pickup(s) to any of the pins. Then re-insert the header into the housing.



### Diagram #8

#### If the instrument has a Battery Holder:

If your instrument has a 9 or 18 Volt battery holder you can still use the EMG Connectors to supply power to the pickups. Simply cut and strip the wires from the battery clip provided. Twist the wires together (Red to Red and Black to Black) and use the shrink tubing included to cover the connections. Soldering the wires is recommended.



### Diagram #9

#### +18 Volt Wiring Option:

If you want to operate your instrument at +18 Volts for more headroom then use 2 batteries wired as below. If you are using any type of boost or EQ in your instrument (EMG-BT, BQ, etc.), then +18 Volts is highly recommended.

